

# Smart 22 L – Premium 22 L Charging Station for Electric Vehicles



MENNEKES charging station for use in public areas.

- According to Mode 3 (IEC 61851)
- Charging socket type 2
- Charging up to 22kW
- Enclosure made of sheet steel, galvanised, primed and powder-coated
- Protection Class IP44

Technical changes reserved

**Note:** This data sheet is valid for the following product range:

1319621SW

1313616SW

**MENNEKES**  
Elektrotechnik GmbH & Co. KG  
Spezialfabrik für Steckvorrichtungen  
Aloys-Mennekes-Str. 1  
D-57399 Kirchhundem

Tel. +49 (0) 27 23 / 41-1  
Fax +49 (0) 27 23 / 41-2 14  
E-Mail [info@MENNEKES.de](mailto:info@MENNEKES.de)  
Internet [www.MENNEKES.de](http://www.MENNEKES.de)

Service by  
**MENNEKES®.**  
Always well  
informed.

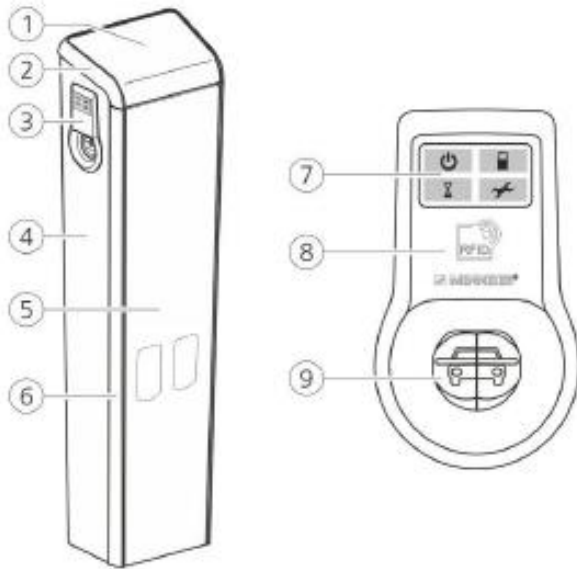
## Features

- MENNEKES charging station for use in public areas for recharging electric vehicles according to IEC 61851
- Completely wired - ready for grid connection
- Auto-switch function for automatic switching between 20 A and 32 A charging cables
- Status information by LED display
- Operation in combination with eMobility Gateway and Backendsystem via Open-Charge-Point-Protocol (OCPP)
- Terminals for the purpose of connecting additional charging systems via RS485 bus
- Heated charging socket (below approx. 3° C)
- One hand operation
- Integrated MCB's and RCD's
- Cable release in case of grid failure
- Charging column with temperature controlled ventilation system
- Enclosure made of sheet steel, galvanised, primed and powder-coated

## Technical Data

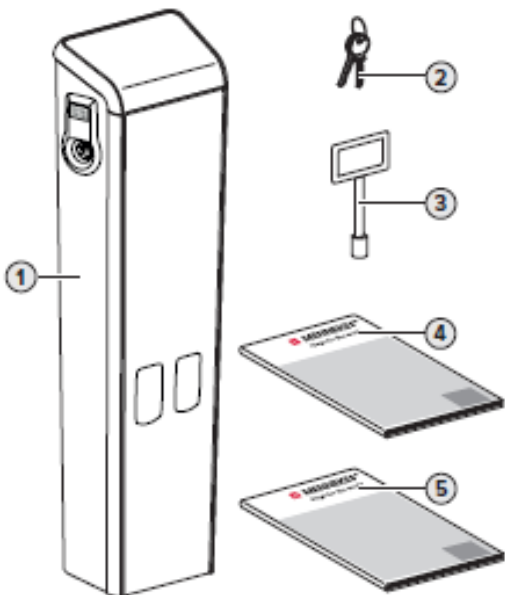
Type (Part number)	Ladestation Smart 22 L (No. 1319621SW) Ladestation Premium 22 L (No. 1313616SW)
Nominal voltage	400 V AC $\pm$ 10%
Nominal frequency	50Hz
Nominal current	63A
Maximum backup fuse	80A
Charging power Mode 3	22kW
Max. charging current	32A / 3 ph
Supply line	5 x 2 x 50 mm <sup>2</sup> , rigid 0,75 – 35 mm <sup>2</sup> , flexibel 0,75 – 50 mm <sup>2</sup> , tightening torque: 3,2 – 3,7 Nm
RS485 bus	2x2 terminal points and 2 shield contacts for shielded twisted-pair cables. rigid 0,08 - 6 mm <sup>2</sup> , flexibel 0,08 - 4 mm <sup>2</sup> .
Protection class	IP 44
Dimensions (H x W x D)	1300 x 350 x 250 mm
Weight	73 kg

## Assembly



1. Deckelplatte
2. Deckel
3. Steckdosenpanel (2x)
4. Grundgehäuse
5. Frontplatte
6. Profilleisten
7. LED-Infofeld zur Statusanzeige
8. RFID-Lesegerät
9. Ladesteckdose Typ 2 (Mode 3)

## Delivery Contents



1. Ladesäule
2. Schlüsselsatz zur Entriegelung des Schwenkhebels
3. Schlüssel zur Entriegelung der Deckelplatte
4. Betriebs- und Installationsanleitung
5. Installationsanleitung MENNEKES ACU / SCU  
(nur bei Smart 22 L)